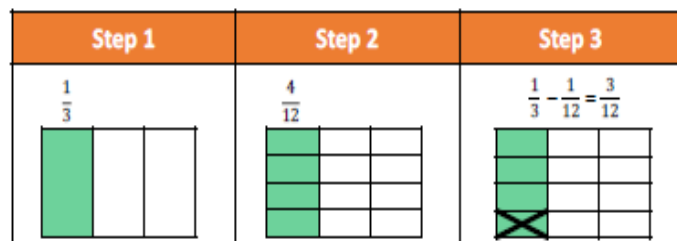


Fluency Unit 9 lesson 6

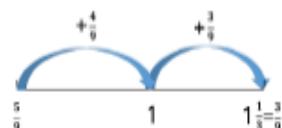


Use an area model to help you solve  $\frac{5}{6} - \frac{1}{3}$  and  $\frac{7}{8} - \frac{5}{16}$

Tom and Hamish both have the same sized chocolate bar.

Tom has of the chocolate bar left, Hamish has  $\frac{5}{12}$  of the chocolate bar left. How much more does Tom have?

Josh uses a number line to find the difference between  $\frac{5}{9}$  and  $1\frac{1}{3}$



Use this method to find the difference between:

$\frac{3}{4}$  and  $\frac{5}{12}$        $1\frac{4}{15}$  and  $\frac{3}{5}$        $2\frac{2}{9}$  and  $1\frac{1}{3}$

Reasoning Unit 9 lesson 6

Which is the odd one out?

**A**

$$3\frac{1}{4} - \frac{3}{8}$$

**B**

$$3\frac{1}{3} - \frac{2}{9}$$

**C**

$$3\frac{2}{7} - \frac{1}{3}$$

Explain why.

Problem solving Unit 9 lesson 6

The perimeter of the rectangle is  $1\frac{7}{9}$

$$\frac{2}{3}$$

?



Work out the missing length.

